

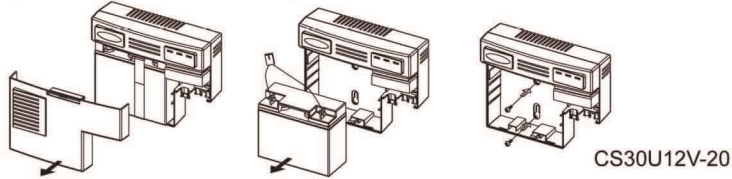
# System Type:

# CyberPower®

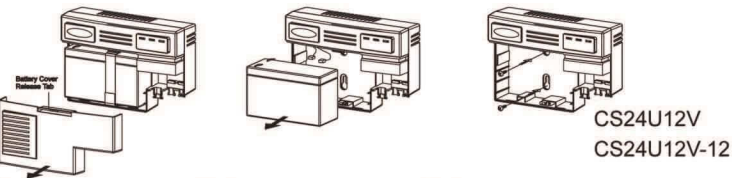
## ENCLOSURE INSTALLATION

Carefully follow these instructions during installation of this device:

- 1.) Carry out the installation in a safe area that is free of excessive dust and has adequate airflow.
- 2.) Screws must be appropriate for total weight of the UPS and the mounting surface material.
- 3.) Do not operate the UPS where the temperature and humidity are outside the specified limits. (Refer to specification in this manual.)



CS30U12V-20



CS24U12V  
CS24U12V-12

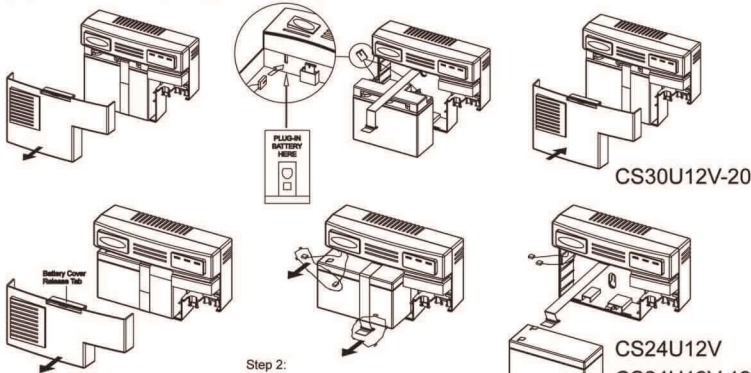
Step 1:  
a. Remove the battery cover.

Step 2:  
a. Unstrap strap from battery.  
b. Slide battery off of the shelf.  
c. Disconnect battery cable connector at chassis end.

Step 3:  
a. Use the enclosed installation template to mark an installation location for the unit.  
b. Mount the unit on the wall with 2 mounting screws into the keyhole slots.  
c. Tighten the screws to secure the units.  
d. Connect the battery connector and replace the battery back.

## BATTERY REPLACEMENT

This battery is hot-swappable. As long as utility power is on, you may leave the UPS and connected equipment on while replacing a new battery.



CS30U12V-20

CS24U12V  
CS24U12V-12

Step 1:  
a. Remove the battery cover.

Step 2:  
a. Loosen the battery strap.  
b. Disconnect battery cable connector to remove battery.  
c. Replace with new battery and re-connect the battery connector.

Step 3:  
a. Tighten the battery strap and close the battery cover.

## OPERATION

Connect: Equipment and Power

- Step1. Plug the UPS power cord into the utility power cord inlet
- Step2. Plug the UPS power cord into the wall outlet.



The UPS battery charges when it is connected to utility power. The battery charges fully during the first **24 hours** of normal operation. Do not expect full battery run capability during this initial charge period.

## COLD START

The cold start feature is for applying power to the UPS and connected equipment when the UPS is off and there is no utility power. Before using the cold start feature, please make sure the battery is charged. To start the cold start feature, press the recessed cold start button with a small pointed object.



Once the battery is disconnected, the connected equipment is not protected from power outages.

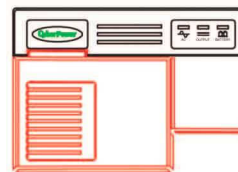


Deliver spent batteries to a recycling facility or ship to the manufacturer in the replacement battery packing material.

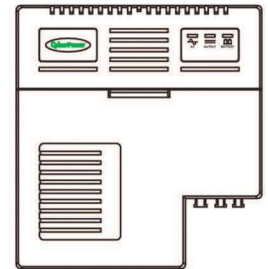
## WARNING INDICATOR

Indicator	Color	Condition
AC	Green	UPS is on utility power.
	Yellow	UPS is on battery power.
OUTPUT	Green	DC output power is provided by the battery or utility power.
BATTERY	Red	The battery is not connected or the battery needs to be replaced.

## • Front Panel



CS24U12V / CS24U12V-12



CS30U12V-20



# System Type: **PSI**

PowerTec Solutions International

## Visual Indicators

Battery	Color: Red	Service or replace battery. Or Battery is not installed in NXG Vision.
Mute	Color: Yellow	Flashing: Audible Alarm silenced for 24 hrs. Solid: Audible Alarm Silence Until manually enable.
System Status	Color: Green	NXG-Vision is receiving AC power load to operate under normal conditions.



## Visual and Audible Status/Alarm Signals

State	Visual Indicator	Audible Indicator	Description
Normal	System Status Indication On		Operating under normal AC line power load and conditions. Charges battery. Battery is connected and in good condition.
On Battery	DC Indicator On		AC line power failure or AC cord disconnection. NXG-Vision is being supplied with battery power.
Replace Battery	Battery Indicator On	1/2 second audible indicator every 15 minutes	Replace faulty or end of life battery.
Battery Missing	Battery Indicator On		NXG-Vision is operating on AC line power only without available standby power for outage scenario. When battery is removed from unit, battery indicator will illuminate after 5 seconds.
Low Battery	DC Indicator Flashes	1/2 second audible indicator 4 times per minute	Battery has reached equal to or less than 30% remaining Capacity on battery discharge.

