

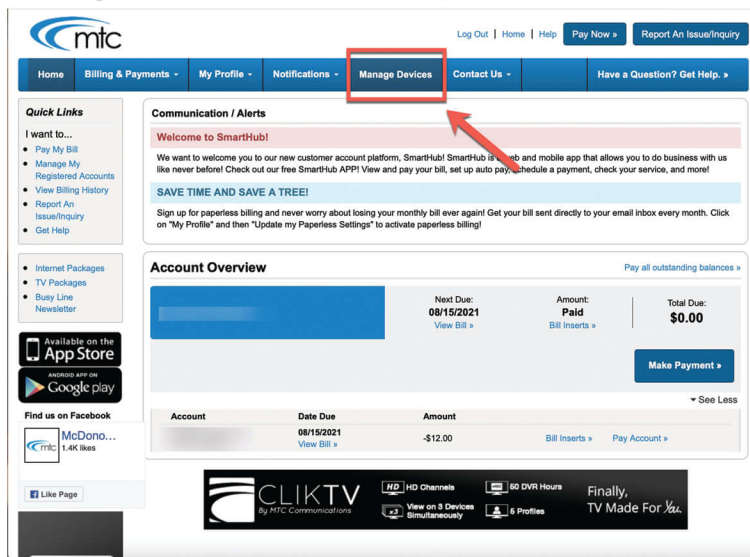


# How To Manage Your Home Internet with SmartHub (Web)

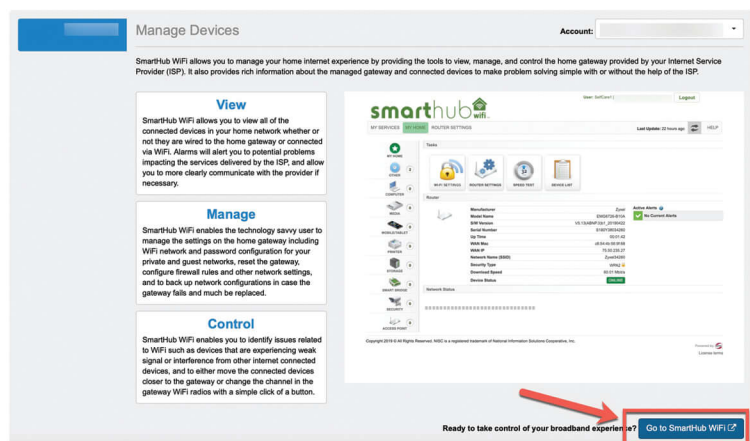
With **MTC's Advanced Wi-Fi** and SmartHub, it's easy to manage your Wi-Fi network and in-home devices.

Here is how to start using the **Advanced Wi-Fi** management features on your account using your online SmartHub account. These features are only available to customers that have **MTC's Advanced Wi-Fi** router and service.

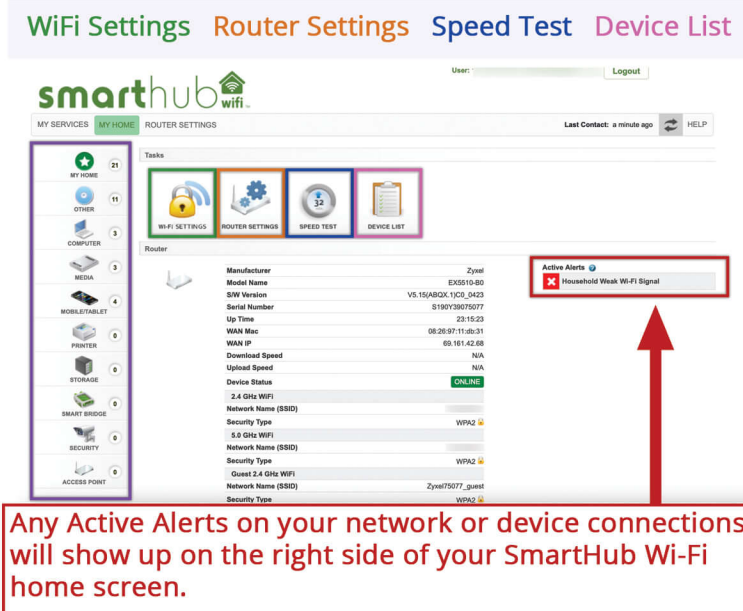
**Step 1:** From the SmartHub Home Screen, click the "Manage Devices" button in the top blue bar.



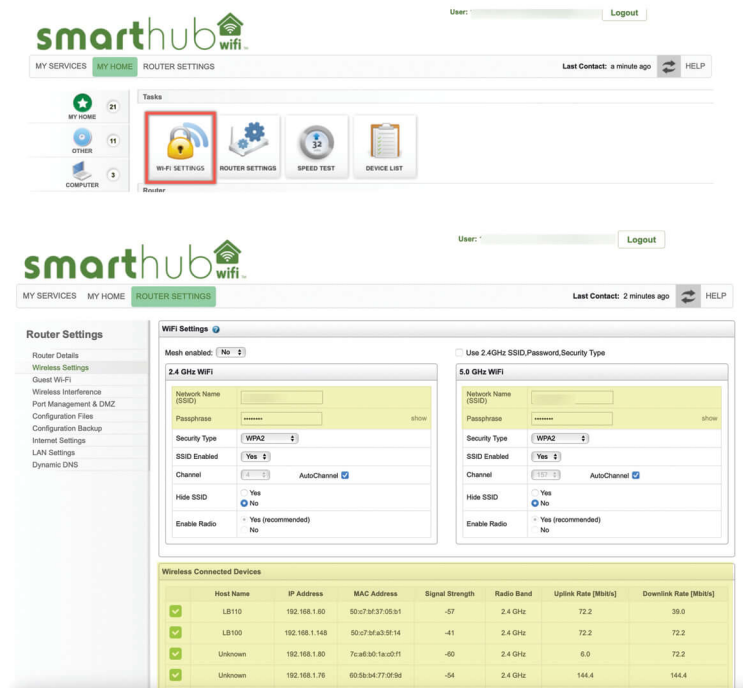
**Step 2:** On the following "Manage Devices" screen, click the "Go to SmartHub Wi-Fi" button in the bottom right corner to open up the SmartHub Wi-Fi User Services page.



**Step 3:** From the SmartHub Wi-Fi page, see the different Device Management task options in the center of the page, view your connected devices on the left column of the screen, and see any active connection alerts. Click on each icon or tab to access that task's content.



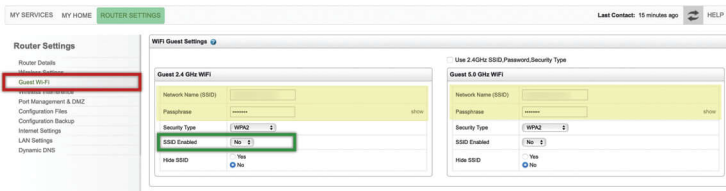
**Step 4:** When accessing "Wi-Fi Settings," view your network name, passphrase, and all the connected devices.



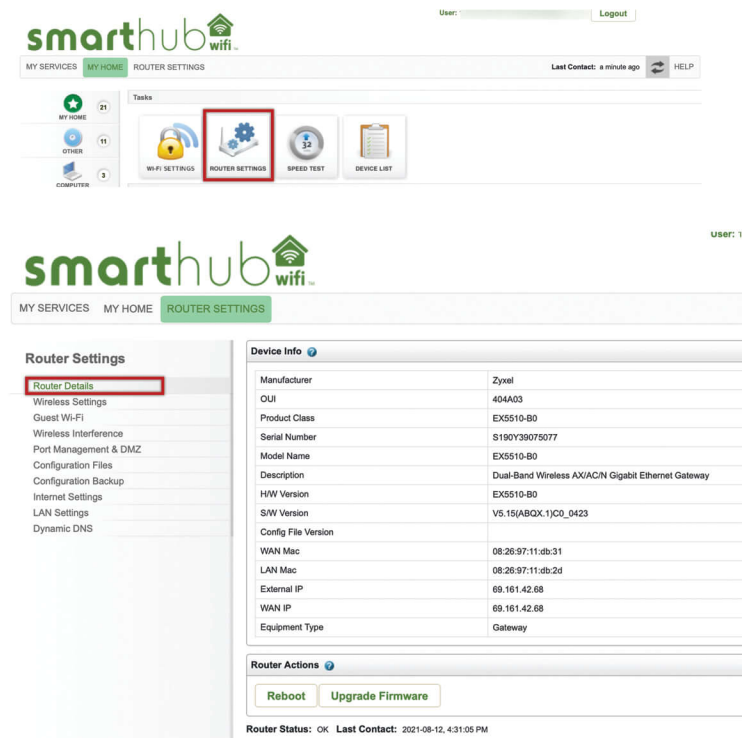


# How To Manage Your Home Internet with SmartHub (Web) Contd.

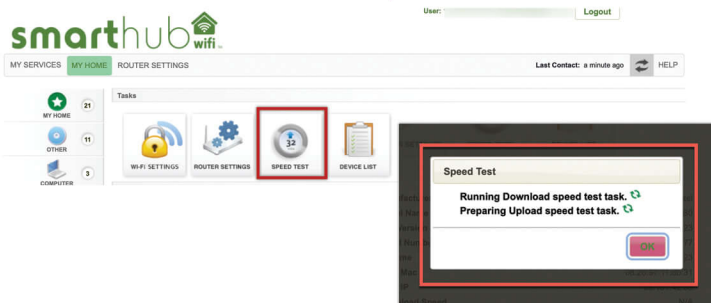
**Step 4b:** When accessing the **"Guest Network"** from the left panel under **"Wireless Settings,"** check on the two 2.4 and 5 GHZ networks, set up the Wi-Fi network name (SSID), and the password for the network. Easily enable a guest network by changing the drop down box next to SSID to **"YES."**



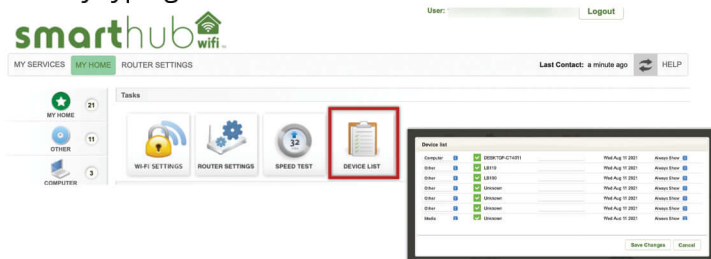
**Step 5:** When accessing **"Router Details,"** view your router's information (manufacturer, product class, etc.)



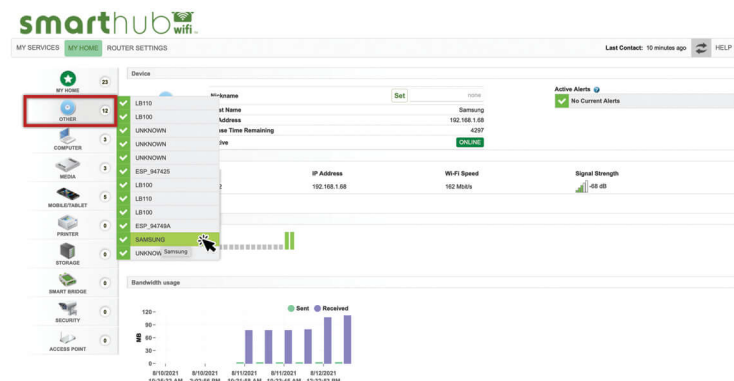
**Step 6:** To run a speed test on your ROUTER (not your individual device), click on the **"Speed Test"** task box.



**Step 7:** To view your connected devices, click **"Device List"** and scroll down through the pop-up box. Easily configure a device's type from the drop down selection menu and name by typing into the **"Nickname"** box.



**Step 8:** To individually configure each device, see the device's signal strength, network connection, IP address, etc., hover your mouse over the device's section to view a list of all devices within that device type group and then click on the device.



If you have any additional questions on your **MTC Advanced Wi-Fi** service and using SmartHub to manage your connection, call our office at 309-776-3211.