

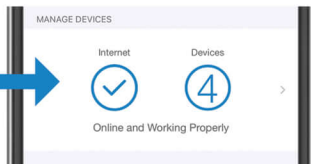


How To Manage Your Home Internet with SmartHub (Mobile)

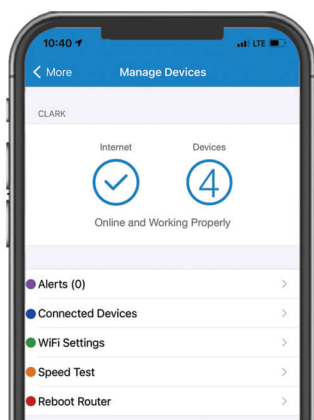
With **MTC's Advanced Wi-Fi** and SmartHub, it's easy to manage your Wi-Fi network and in-home devices.

Here is how to start using the **Advanced Wi-Fi** management features on your account using your mobile device. These features are only available to customers that have **MTC's Advanced Wi-Fi** router and service.

Step 1: From the SmartHub Home Screen, click the **"Manage Devices"** white section in the middle of the screen.

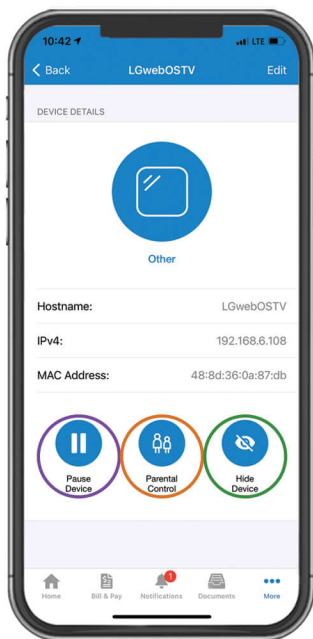
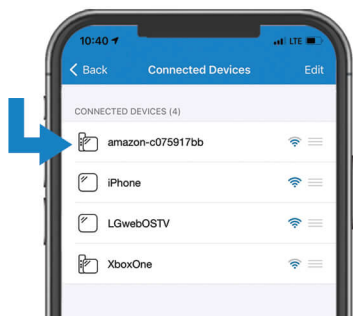


Step 2: On the following **"Manage Devices"** screen, view the **Advanced Wi-Fi** options:

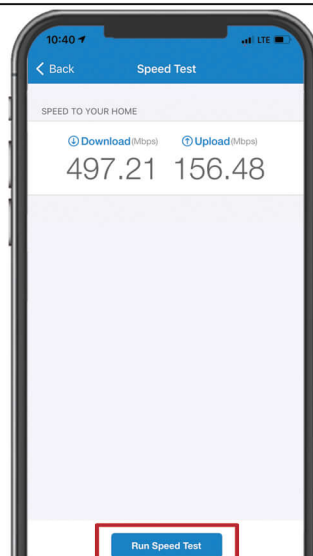
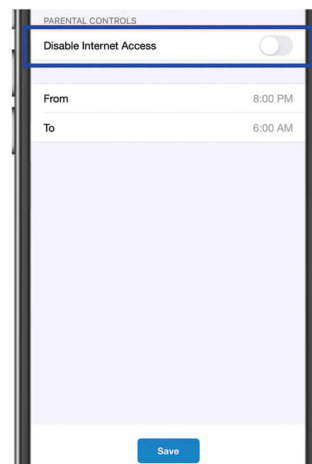


- **Alerts:** See any connected devices alerts from your router
- **Connected Devices:** See and manage each of the devices connected to your network
- **WiFi Settings:** Manage your Wi-fi name, settings, & guest network
- **Speed Test:** Run a speed test on your ROUTER (not your device) to get a true speed test result
- **Reboot Router:** Reboot your router - **WARNING: all devices connected will be temporarily disconnected**

Step 3: Next, click on the **"Connect Devices"** option to pull up all of the devices connected to your Wi-Fi. To manage each device, click on the device to **pause the device's connection**, **access parental controls**, or **hide the device from the network**.



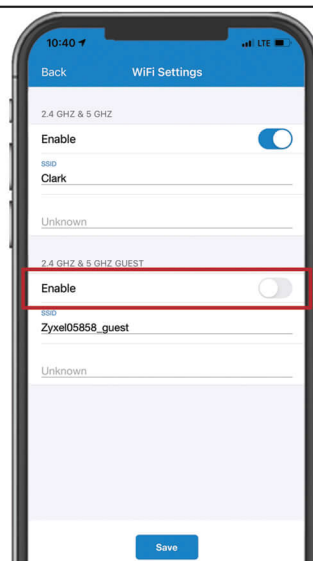
Step 4: When accessing **"Parental Controls"** after selecting a device from the **"Connected Devices"** screen, tap the **"Disable Internet Access"** button to turn off that device's Wi-Fi connection, or set up usage hour parameters in the **"From"** and **"To"** boxes.



Step 5: On the **"Speed Test"** option, hit the **"Run Speed Test"** button to run a speed test directly on your router.

Step 6: On the **"Wi-Fi settings"** option, check on the two 2.4 and 5 GHz networks, set up the Wi-Fi network name (SSID), and the password for the network under the SSID network name.

Easily enable a guest network by touching the **"Enable"** button in the **"Guest Network"** box.



If you have any additional questions on your **MTC Advanced Wi-Fi** service and using SmartHub to manage your connection, call our office at 309-776-3211.